



**BENOIT ENERGY SERVICES LIMITED**

**RC-785126**

**Corporate Profile**  
CORPORATE PROFILE

#### **ABSTRACT**

Our Salient Aims – Provision of Services in the Oil and Gas Sector as well as other related Services in other sectors are hereby presented for the information of our potential Clients. It is Services at its best we do offer.

**-BESL**

## Table of Contents

1. About Us
2. POLICIES
3. SCOPE OF SERVICES
4. CLIENTS
5. KEY MANAGEMENT PERSONNEL
6. HSE
7. REGISTRATIONS AND CERTIFICATIONS
8. EQUIPMENT DESCRIPTION WITH PICTURES

## ABOUT US

**BENOIT ENERGY SERVICES LTD** is an indigenous Limited Liability Company incorporated in 2008 under the company and Allied Matter Act 1990 and commenced operations in 2010. BENOIT ENERGY SERVICES LTD is a Nigerian based contracting company with a principal focus on oil and gas services but its specialty in the areas below;

- High Pressure Pumping (Brine Filtration, Industrial cleaning, etc.)
- Process and Pipeline Services (Pre-Commissioning, Commissioning, Maintenance, Operations, Inspections, De-Commissioning, Pipeline Management, Tank De-Slugging, Hydro-Jetting, etc.)
- Sales and Processing of Chemical, Filter Cartridges, Filter Bags.
- Well-Head Maintenance, Testing of Annulus, Setting and Repairs of BPV, SSSV etc. and
- Various Engineering Consultancy Services.

Over the years, **BENOIT ENERGY SERVICES LTD** has developed an impressive reputation in rendering the above services and it has enhanced the company's reputation and increased Operators' confidence.

At **Benoit Energy Services Ltd**, quality services delivery is our watchword.

**BENOIT ENERGY SERVICES LTD HAS ITS OPERATIONAL BASE AT:**

**4 GOD DELIGHT AVENUE OFF ODANI EAST WEST, ELELENWO, ELEME ONNE  
ROAD PORT HARCOURT, RIVERS STATE.**

EMAIL: [info@benoitenergyservicesltd.com](mailto:info@benoitenergyservicesltd.com)

[benoitenergyservices@yahoo.com](mailto:benoitenergyservices@yahoo.com)

[gift@benoitenergyservicesltd.com](mailto:gift@benoitenergyservicesltd.com)

URL: [www.benoitenergyservicesltd.com](http://www.benoitenergyservicesltd.com)

PHONE: +2348033364833

## OUR POLICIES



### QUALITY ASSURANCE POLICY

**BENOIT ENERGY SERVICES LTD** has as a policy that its business will be organized, planned and executed in such a manner as to:

- Plan, procure, inspect, test, document and conduct all activities and functions concerned with the attainment of quality.
- Not to sacrifice QUALITY in order to meet an unreasonable time schedule or target.
- Supply accurate data and information for audit
- To implement, operate and maintain a QUALITY ASSURANCE SYSTEM in compliance with the requirement of ISO 9001 and other international codes
- To fully implement Non Conformation report (NCR) and corrective Action Report (CAR) for close out
- Adhere to our client's QUALITY standards in executing all projects

**GIFT OKERE**

Managing Director





## Our statement of General Health, Safety and Environment policy is:

Our HSE policy is the foundation of the Company's HSE Management system. We are committed in protecting the health and safety of our employees and interested parties and for such to safe guard the environment. Note: interested parties are our visitors, stakeholders and contractors.

To provide adequate control of the health and safety risks arising from our work activities;

To consult with our employees and interested parties on matters affecting their health and safety;

To provide and maintain safe working environment and equipment;

To ensure safe handling and use of substances;

To provide information, instruction and supervision for employees and interested parties

To ensure all employees are competent to do their tasks, and to give them adequate training;

To prevent accidents and cases of work-related ill health;

To maintain safe and healthy working conditions; and

To review and revise this policy as necessary at regular intervals.

Strive to minimize the environmental impact of all our operations

Execute our activities in compliance with local and international laws and standards

**GIFT OKERE**

Managing Director



## EQUIPMENT MAINTENANCE POLICY

All equipment **MUST** be regularly maintained. All unserviceable equipment shall be locked out and tagged as thus.

The objective of such routine Preventive maintenance is to reduce equipment Downtime and Lost of time incidents resulting from lack of maintenance culture.

**Routine** maintenance and minor repairs shall be undertaken at the work site while serious maintenance of completely broken down equipment shall be down at the base.

Turn around maintenance shall be planned and executed once a year. The aim being to put all equipment in serviceable order for hitches free operation/use.

It is mandatory that equipment operators report immediately any break down or faults observed in their equipment. Late reportage of faults shall be met with appropriate reprisals.

Toolbox meetings on proposed equipment maintenance **MUST** precede the maintenance work planned for each day.

All maintenance Crew must be trained and only experienced personnel shall be job placed and authorized to carry out maintenance.

All maintenance work shall be carried out in accordance with the company's safety maintenance procedures. The maintenance crew must be briefed before each maintenance episode.

The implementation of the maintenance policy shall be the responsibility of the Maintenance Engineer, who should report to the Base/Facilities Manager/Project Manager.

**GIFT OKERE**

Managing Director



## NIGERIAN CONTENT POLICY

This Policy has been setup with objective of putting in place a framework for institutionalizing, regulating and monitoring the development of local companies, contractors, manpower, Local communities and made Nigeria goods and services.

Benoit is position as 100% owned and operated by Nigerian, delivering the results is a true measure to achieve our Nigerian Content Plan.

In order to achieve this, Benoit has the following objectives (Training, Community Development, Manpower Development, Promotion of Local Materials, Research / Development and Seminars / Workshop) upon the award of any contract.

### *TRAINING:*

Training is an integral part of the nations building which is the vision of the management and staff of Benoit Energy Services Ltd. In compliance with the call for Nigeria content, Benoit will ensure that Nigerian personnel receive adequate training in various field of work specialization to enhance personnel career development with minimal supervision. Benoit would measure the performance of the participants via classroom test and field practical exercises. In addition to drawn up training plan, Benoit from time to time will ensure that seminars are organized to enlighten Host communities on the dangers associated with the vandalization of oil and gas installation as well as Hazards and environmental impact of oil spillage and control measures.

Benoit will ensure that employment and skill development for Nigerian staff in the work program for which the planned operation are complied to meet the Nigerian Content policy.

### *COMMUNITY DEVELOPMENT:*

To improve the well being of host community, Benoit will ensure full participation on the development of infrastructure through community development assistance program (CDA). Benoit CLO has been mandated to conduct survey in conjunction with the leaders of the host community on areas of interest as regards, community assistance. The level of assistance is measured and monitored via feedback generated during post operations analysis reports. Such report will be forwarded to you Company CLO on regular bases after each field operation.

**GIFT OKERE**

Managing Director

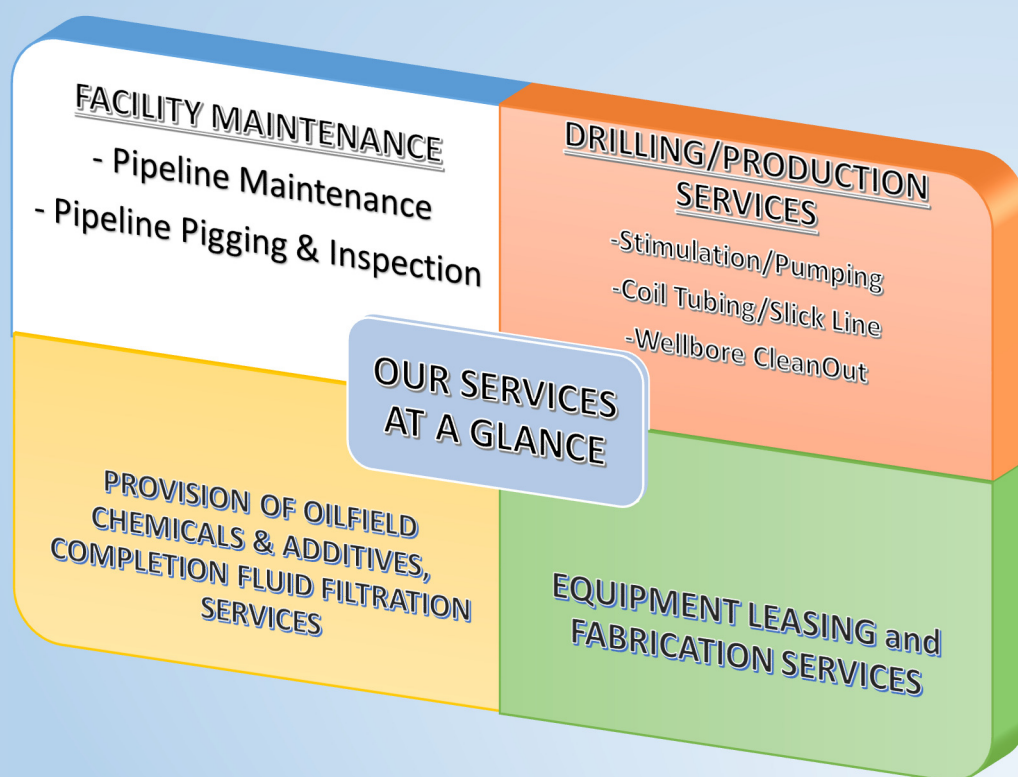
## **MISSION STATEMENT**

**Our mission statement is to become an indigenous company with global status which employs self-motivated professionals to drive efficiency, quality and cost effective services.**

## SCOPE OF SERVICES

Benoit Energy Services Limited undertakes various services inclusive of those indicated in the graph below.

We also supply Brine filtration consumables such as Diatomaceous Earth (DE) and Filter Cartridges, all of different grades.



## **OUR CLIENTS**

Some of our Clients include:

- a) **HAMILTON TECHNOLOGIES LTD – AGIP**
- b) **PROFLUID WELL SERVICES LTD – AGIP**
- c) **BEST LAND AND SEA SERVICES LTD – SAPETRO**
- d) **OIL FIELD MANAGEMENT SERVICES LTD – MID-WESTERN OIL AND GAS**
- e) **NPDC**
- f) **SHEBA**
- g) **WEAFRI – TOTAL**
- h) **CONOIL**



### KEY Management Personnel

We parade a highly qualified and skilled personnel with several years of experience in the Oil & Gas Industry, who manage the affairs of the Company.

**Gift Okere**

Managing Director

- Email:- [gift@benoitenergyservicesltd.com](mailto:gift@benoitenergyservicesltd.com)
- Cell: +2348033364833

**Yusuf Anyogo**

Business Development  
Manager

- [yusuf@benoitenergyservicesltd.com](mailto:yusuf@benoitenergyservicesltd.com)
- Cell: +2348031897948

**Iwuanyanwu Ernest  
Okwudili**

Operations/Field Engineer

- [ernest@benoitenergyservicesltd.com](mailto:ernest@benoitenergyservicesltd.com)
- Cell: +2348033389625

**Oluchi Ngwuike**

Admin/Secretary

- Email:- [benoitenergyservices@yahoo.com](mailto:benoitenergyservices@yahoo.com)
- Cell: +2348037313911

**Kanu Justice  
Chidoziem**

HSE Manager

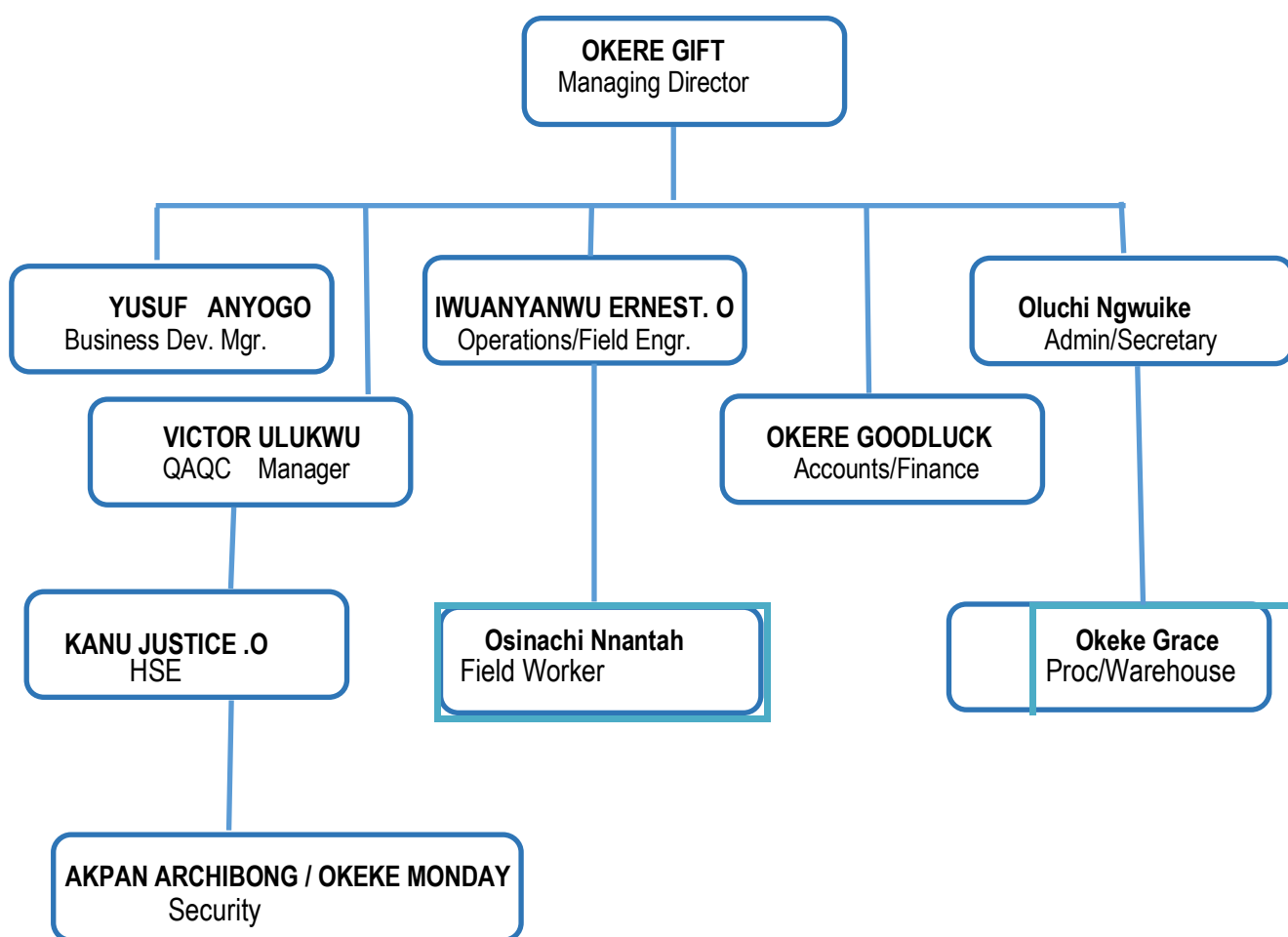
- [justice@benoitenergyservicesltd.com](mailto:justice@benoitenergyservicesltd.com)
- Cell: +2348068098616





## Company Organogram

### ORGANISATIONAL CHART



  
**OKERE GIFT**  
Managing Director



## **2020 SAFETY STATISTICS**

0 - LTI'S

0 - Vehicle Related Incidents

0 - Security Incidents

18,328 Total Man- hour

# REGISTRATIONS AND CERTIFICATIONS

We are duly registered with the relevant Regulatory agencies in the Oil & Gas sector such as Nipex, DPR and the NCDMB.

## DPR registrations

  
FEDERAL REPUBLIC OF NIGERIA  
**PERMIT TO OPERATE AS AN OIL INDUSTRY SERVICE COMPANY**  
**SPECIALIZED CATEGORY**

PERMIT NO: DPR/OGISP/20/6966545/N195220

This Permit is hereby granted to  
**BENOIT ENERGY SERVICES LIMITED**

of **N0. 4 God Delight Avenue, Off Odani Road By Odani**  
**Junction, Eleme Onne Road Port Harcourt, Rivers State., Port Harcourt, River**

to render the service to the Oil Industry in the Category listed hereunder:  
**DRILLING/PRODUCTION**  
- STIMULATION, PUMPING, COILED TUBING/SICKLINE  
- WELLBORE CLEANOUT SERVICES

This Permit expires on the **Friday, August 6, 2021**

Fee Paid: ₦ **250,000.00**

Dated **6th** day of **August** 20 **20**

   
Director of Petroleum Resources

This permit does not cover "Supply of Expatriate Manpower" in any guise



FEDERAL REPUBLIC OF NIGERIA  
**PERMIT TO OPERATE AS AN OIL INDUSTRY SERVICE COMPANY**  
**SPECIALIZED CATEGORY**

PERMIT NO: DPR/OGISP/19/1692303/N182284

This Permit is hereby granted to

**BENOIT ENERGY SERVICES LIMITED**

of **N0. 4 God Delight Avenue, Off Odani Road By Odani**

**Junction, Eleme Onne Road Port Harcourt, Rivers State., Port Harcourt, River:**

to render the service to the Oil Industry in the Category listed hereunder:  
**FACILITY MAINTENANCE**

- PIPELINE MAINTENANCE
- PIPELINE PIGGING AND INSPECTION

This Permit expires on the **Monday, December 7, 2020**

Fee Paid: ₦ **250,000.00**

Dated **7th** day of **Decemeber** 20 **19**

Director of Petroleum Resources

This permit does not cover "Supply of Expatriate Manpower" in any guise



# Equipment and Specifications



The Centrifugal Pump, with a fluid delivery rate of 15 – 18 barrels per minute, is a diesel driven pump fitted with 4" suction and discharge manifolds. All our pumps are equipped with clutches that enable engine disengagement from the pump while engine is still running. The whole unit is skid mounted



## UNION TX-90 SPECIFICATIONS

Union TX-90 triplex pump, #3 Monel fluid end with 2.875" plungers, disc valves, 8.33:1 internal gear, Cummins 6BT diesel engine, rebuilt Fuller Roadranger RTO11609A manual transmission, control panel, fuel tank, toolbox, plunger lubricator, shear relief valve, pressure gauge, suction stabilizer, discharge dampener. 10,700 lbs. 6'8" Wide, 15'8" Long and 8' 6" High



Our twin Cartridge filter units come with varying sizes holding between 40 to 100 cartridges with maximum recommended flow rate of 12.6bbl/min and a working pressure of about 105 psi (7bar). The two pods can be used jointly or separately through a valve arrangement. There are all skid mounted.

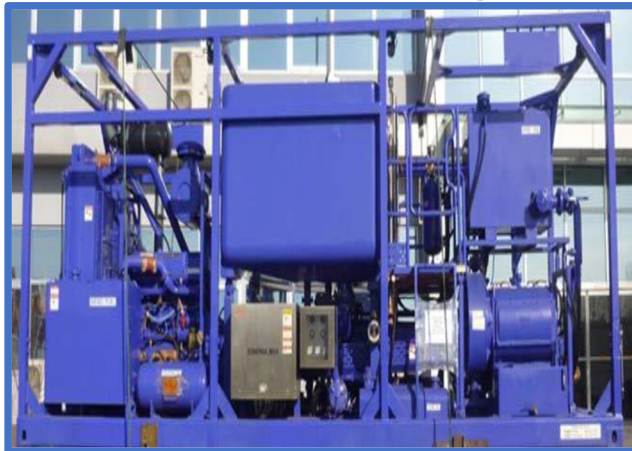


The Slurry (Mixing) Tank is dual compartment enabling simultaneous precoating and body-feeding during operations with the use of two Filter Press in parallel rig up. There also come with their body-feed vacuum pump attached. The slurry mixture is air-agitated to obtain the mixing.



**We have the DE Filter Press of 1200 sq. ft effective filtering area, which makes them very effective in handling normally required modern rigs demand. There come with either the standard 4" QC or WECO connections and are skid mounted.**

## The HT-400 Pump



**This is one of our high-pressure pumps suitable for many applications such as PIGGING and PUMPING of fluid in to the Well. With a manifold pressure of about 103 MPa (15,000 psi) and a low-pressure manifold at 1.03 MPa (150 psi). It has a 2-compartment displacement tank of 25bbl (4 cubic meter) capacity.**





**There come in different sizes, our stainless storage tanks are best suited for storing all drilling and completion fluids.**



**The Vertical Pressure \leaf (VPL) Units are of very high tech and quality design useful for deployment in the filtering of sea water or completion fluid when space consideration at locations is of importance. This is a 600 sq ft. effective filtration area carrying about 20 leaves. It has a maximum flow rate of 15bbl/min with a working pressure of up to 105 psi (7bar). The cleaning system is pneumatic driven with very high efficient spray nozzles.**





### **Centrifugal United Pump 8BFH**

4 stage horizontal split case centrifugal pump with 13" impellers, 10 inch ANSI 600# suction connection with suction Strainer and Mag flow meter with pressure gauges, 8 inch ANSI 600# discharge connection, packaged with good used MTU 12V-4000 diesel engine rated 1875 HP at 1900 RPM, with pneumatic clutch, and Cotta G01915E-1 gear increaser with 1.89:1 ratio. Package has PLC touch screen with engine controls integrated into the same panel. The following transmitters send data to the PLC: flow meter rates, low suction pressure, high discharge pressure, pump bearing temperature, gear box oil temperature, gear box oil pressure, vibration, and all engine controls and ECM info is sent to engine control screen. Engine is mounted with vibration isolators and pump is hard mounted to help eliminate vibration and harmonic issues.

## TESTING HIGH PRESSURE PUMP UNITS AT BASE



Maintaining high Quality Services demands reliability tests on all Our Units on a regular basis and prior to Mobilization.



# Warehousing



**Our warehouse stocks  
salts and filtration media  
for preparation of  
Completion fluids and its  
filtration.**

# SPARES STORE



Our spares store is well stocked to take care of running, maintenance and repairs needs



**Certified Low-Pressure Hoses**





**BENOIT ENERGY SERVICES LTD**